

# LUXURY VINYL

# RENAISSANCE

luxury vinyl tile



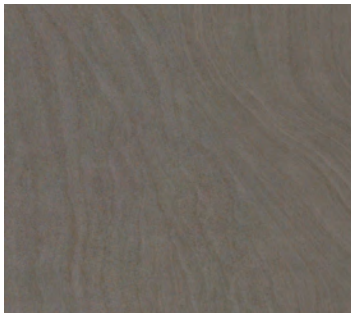
100 Canvas



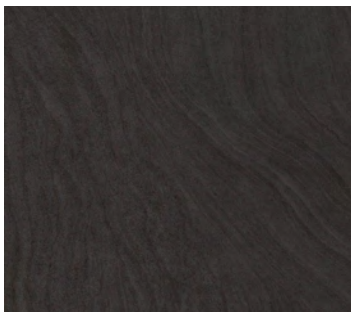
201 Umber



500 Ash



501 Graphite



502 Coal



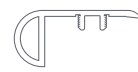
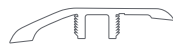
200 Stucco

<b>Style Number</b>	<b>0331V</b>
<b>Construction</b>	DirectGlue
<b>Thickness</b>	2.5mm
<b>Wear Layer</b>	20mil
<b>Size</b>	18" × 18"
<b>Finish</b>	ArmourBead
<b>Edge Description</b>	Pressed Beveled
<b>SF per Carton</b>	35.95
<b>SF per Pallet</b>	1,725.60
<b>Installation</b>	Adhesive full spread
<b>Installation Grade</b>	Above, On, Below
<b>Ortho-Phthalates Free</b>	Yes
<b>Groutable</b>	Yes
<b>FloorScore Certified</b>	Yes
<b>Residential Wear Warranty</b>	35 year
<b>Light Commercial Warranty</b>	10 year

## Suggested Adhesive & Grout

Style Name	Style Number
Shaw 200 TPS Adhesive	<b>052VS</b> 1 gal.   <b>026VS</b> 4 gal.
Kwik Flash Adhesive	<b>081VS</b> 1 gal.   <b>080VS</b> 4 gal.
Shaw S150 Spray Adhesive	<b>069VS</b> 22-oz. can
LG4100 Adhesive	<b>073VS</b> 1 gal.   <b>312VS</b> 4 gal.
Grout	<b>055VS</b>

## Coordinating Trim



Style Number	OmniTrim Multi-Purpose Reducer / T-Molding	Quarter Round	Overlap Stairnose*
0331V	VSUN3	VSQT3	VSSN3
Length	94"	94"	94"

\*Packaged with molding track