

Talk2M used addresses and ports

The information applies to Talk2M connections using Free+ and Pro services.

To make the Talk2M connection work, different ports must be opened for outgoing connection.

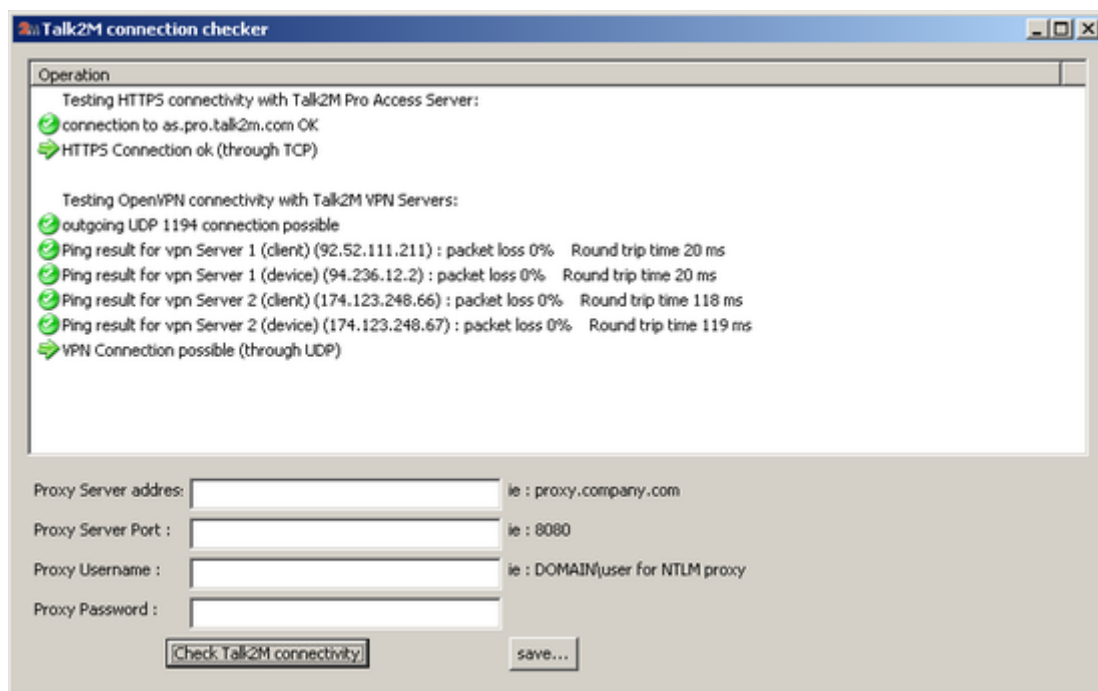
Hereunder you will find detailed information about the ports and address used for the Talk2M connection.

To check if the different ports and addresses needed for the Talk2M connection can be reached from your network, you can use our [Talk2MConnectionChecker tool](#).

General note concerning used addresses and ports

Under some circumstances, it is necessary to shift a Talk2M account from one VPN server to another.

This is why we don't recommend the use of IP addresses when configuring a Proxy server or a firewall.



1. eCatcher connection to Talk2M

The eCatcher will need to connect to following servers:

1. Access Server:
 - Protocol and port used: HTTPS (TCP port 443)
 - Address: as.pro.talk2m.com
2. VPN servers:
 - Protocol and port used:
 - either UDP port 1194
 - either TCP port 443
 - Address: *.talk2m.com

If the Internet connection is established through a Proxy server, then eCatcher will use the TCP protocol.

- Important -

*Since eCatcher 4.1, if eCatcher connects through a Proxy server, this last one should allow outbound connections on Port TCP 443 to hostname: *.talk2m.com.*

2. eWON connection to Talk2M

eWON will need to connect to following servers:

1. Access Server:
 - Protocol and port: HTTPS (port 443)
 - Address: as.pro.talk2m.com
2. VPN servers:
 - Protocol and port:
 - either UDP, port 1194
 - either TCP, port 443
 - Address: *.talk2m.com

If the Internet connection is established through a Proxy server, then eWON will use the TCP protocol.

- Important -

*Since firmware 6.4s6, when eWON connects through a Proxy server, the Proxy on local site should allow outbound connections on Port TCP 443 to hostname: *.talk2m.com.*

Revision

Revision History

Revision Level	Date	Description
1.0	22/04/2015	Creation of document
1.1	16/07/2015	Added Mumbai VPN server
1.2	08/12/2015	Added Europe VPN server
1.3	09/12/2015	Refresh VPN server info

Document build number: 22

Note concerning the warranty and the rights of ownership:

The information contained in this document is subject to modification without notice. Check <http://support.ewon.biz> for the latest documents releases.

The vendor and the authors of this manual are not liable for the errors it may contain, nor for their eventual consequences.

No liability or warranty, explicit or implicit, is made concerning the quality, the accuracy and the correctness of the information contained in this document. In no case the manufacturer's responsibility could be called for direct, indirect, accidental or other damage occurring from any defect of the product or errors coming from this document.

The product names are mentioned in this manual for information purposes only. The trade marks and the product names or marks contained in this document are the property of their respective owners.

This document contains materials protected by the International Copyright Laws. All reproduction rights are reserved. No part of this handbook can be reproduced, transmitted or copied in any way without written consent from the manufacturer and/or the authors of this handbook.

eWON sa, Member of ACTL Group